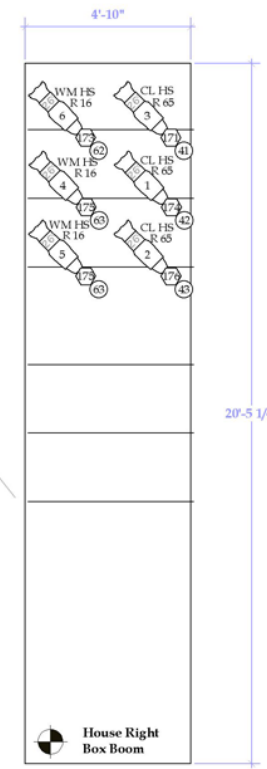
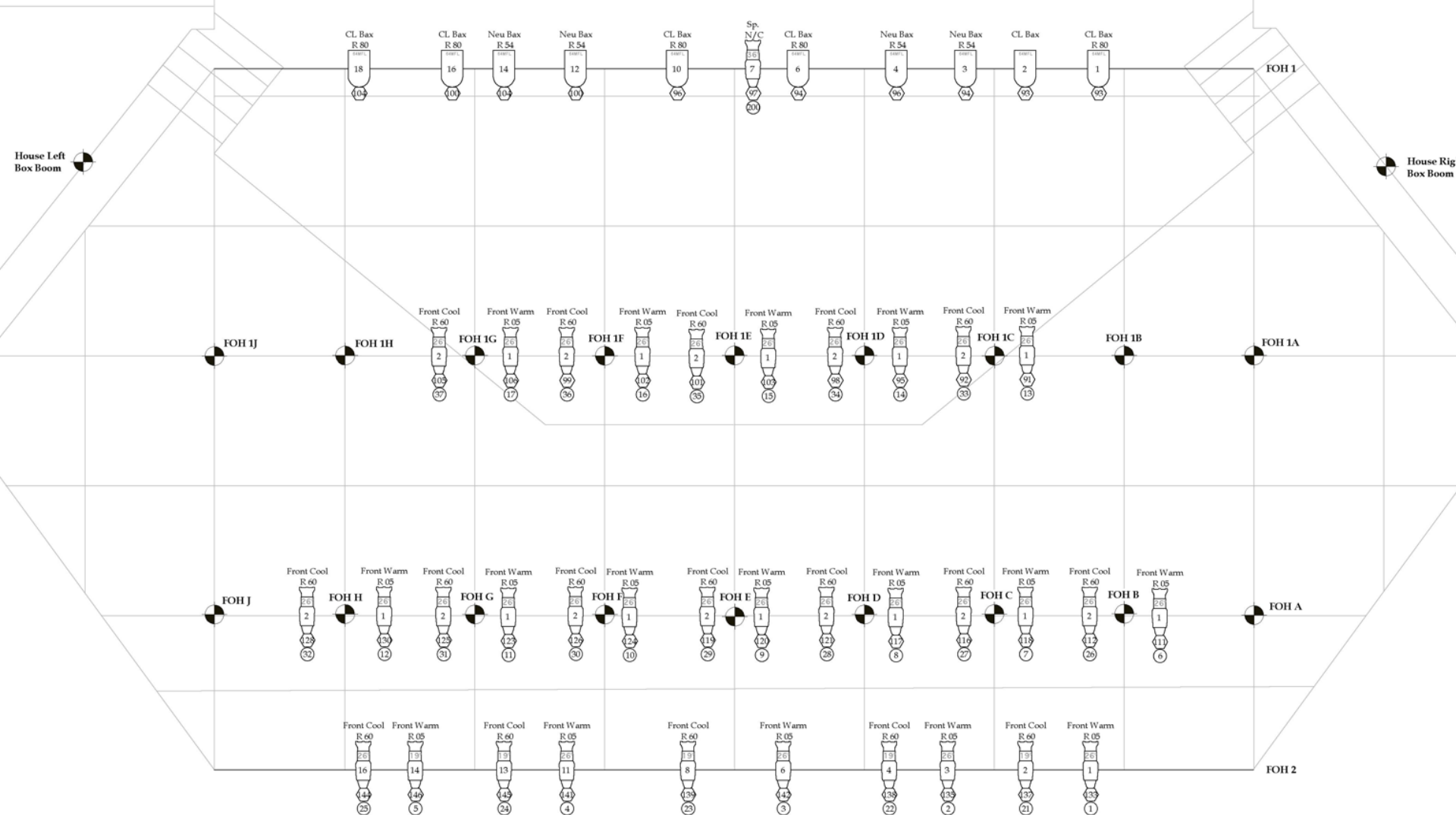


Line Set Schedule	
Line Set 17:	Cyclorama
Line Set 16:	3rd Electric
Line Set 15:	Unused
Line Set 14:	3rd Legs
Line Set 13:	2nd Border
Line Set 12:	Unused
Line Set 11:	2nd Legs
Line Set 10:	2nd Electric
Line Set 9:	Mid Stage Traveler
Line Set 8:	1st Border
Line Set 7:	Scrim
Line Set 6:	1st Legs
Line Set 5:	Unused
Line Set 4:	1st Electric
Line Set 3:	Main Curtain
Line Set 2:	Projection Screen
Line Set 1:	Main Border



Key

- ETC Source 4 19 (575)
- ETC Source 4 26 (575)
- ETC Source 4 30 (575)
- ETC Source 4 10' (575)
- Alum 8" Fresnel (1k)
- PAR 64 MFL (1K)
- Par Cyc 4 Coll (1K)

Legend

- ETC Source 4 19 (575)
- ETC Source 4 26 (575)
- ETC Source 4 30 (575)
- ETC Source 4 10' (575)
- Alum 8" Fresnel (1k)
- PAR 64 MFL (1K)
- Par Cyc 4 Coll (1K)



FOH 3 Note: Not in correct location in scale. Actual Distance From Stager



Midlands Tech Harbison Theatre
Onstage Light Plot

Reperatory Light Plot

1 OF 3 Project Manager: Katy Fox
Designed and Drafted By: Aaron Pelzek

Last Updated: 5/14/2011

Scale: 1/2" = 1'